

The George Daniels Dinner

The dinner will soon be upon us, could those people who have not submitted their menu choice please fill in the form and return it to Alan with any outstanding monies. Alan has asked that anyone who paid by Bank Transfer please write one the menu that they have paid. Menus will be available at the next meeting.

2023 MEMBERSHIP

Membership payment is going well with more than 75% already paid. If you are one few still outstanding please complete a form and post to me, or pay by bank transfer.

Due to the increasing cost of cashing cheques we are happy to accept payment by bank transfer. To keep postage costs down we encourage members with email to take the "email" option.

Due to the ongoing industrial action by postal workers, I will only be posting to those members who have selected post only.

MEMBERSHIP CARDS

As some positions will not be decided until the agm. I will be sending out membership cards until after the event.

FREE ADVERTISING FOR BRANCH MEMBERS.

Contact Bill 01543506195 or electricwilliam@gmail.com

www.slbbhi.co.uk



Est 1858

South London Branch

British Horological Institute

Newsletter No. 52 FEBRUARY 2023

Meetings are held on the 1st Thursday of each month

At The White Hart Barn (Godstone Village Hall)

Godstone Surrey RH9 8DU at 7.30 p.m. for 8 p.m.

INSIDE THIS ISSUE

NEXT MEETING
2nd February 2023

Agm
2nd March 2023

Last Meeting

Timepiece
Magazines

2023
MEMBERSHIP

Membership
cards

www.slbbhi.co.uk

Next Meeting 2nd February 2023

Chronometry and Chronometers on British Voyages of Exploration 1819 to 1836.

Dr Emily Akkermans

It has been sometime since our past president Jonathan Betts retired from the Royal Greenwich Observatory, though he is still curator emeritus. David Rooney is now a freelance author. Our past chairman Rory McEvoy also has moved on to pastures new and Anna Rolls has become the curator of the Clockmakers Museum. So, I am delighted to welcome Dr Emily Akkermans Curator of Time to the South London Branch in a hope to continue its long-term connection to horology at Greenwich.

Dr Emily Akkermans studied horology at the Vakschool, Schoonhoven, Netherlands and has been working with the collection at Greenwich since June 2018. When Emily was appointed as curator of time she was studying for a PhD, and I'm delighted she successfully defended her thesis. Tonight's lecture is the culmination of her research work she has been doing on the use of Chronometers at sea. In particular during the first half of the 19th century when they came into widespread use.

Continued

Continued

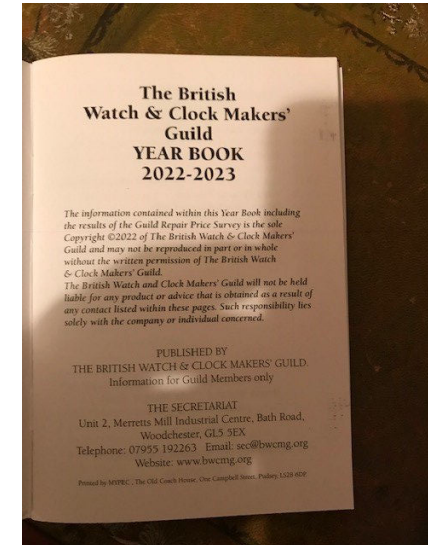
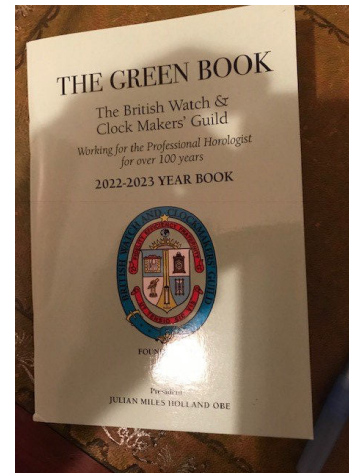
She will examine the practices that were adopted by Royal Naval officers on scientific expeditions that took place between 1819 - 1836. These are Edward Parry's three attempts to find the North-West passage. William Fitzwilliam Owen's survey of the East Coast of Africa. Henry Foster's scientific expedition in the Atlantic and Robert Fitzroy's survey of South America and circumnavigation. By their very nature chronometers can be delicate temperamental instruments that require a delicate touch from one who is familiar in their use, trained in taking readings and the mathematics of piloting these. Emily will include the social and institutional network in which the user of these instruments operated. The role of State, of the Admiralty and the Royal Society. And how the determination of longitude developed not from one instrument but through the interaction and use of a variety of instruments and methods.

Duncan Greig.



Timepiece Magazines

Martyn Hoffman (Paul Hoffman's son) has 5 years of "Timepiece" magazines This is the journal of the British Watch and Clockmakers Guild, including The green year books . 2018 to 2022



He would like them to go to a good home . Contact Martyn:-

Phone 017375 56452

Email martynh36@hotmail.com



at the front of the barrel turning from side to side and flapping its wings balancing with its tail whilst the beak moves in synchronisation with the song. At the end of the song the bird disappears, the cover shuts and leaves no trace of the pistol's real function. The CAD/CAM animated drawings show with great detail the ingenuity of the maker how he pieced together a carriage to eject the bird from the front of the pistol, upright it, and then control all the miniaturised movement of the bird. How the bird is retracted back into the barrel using secondary springs and leavers. How the reciprocating bellows which are housed in the butt of the gun are pumped and provide the air for the miniaturised swan whistle. The bird song being programmed by four cams stacked one upon the other that are moved one after the other into the path of the actuating levers.

It is amazing all the work that has been put into these objects that reside in the Patek Philippe Museum documented by this wonderful film. The work that went into producing the DVD alone is phenomenal but with all technology we are reminded not to stand still for too long as all these things can be streamed from a mobile phone and a popular app.

Duncan Greig

AGM - 2nd March 2023

Our AGM this year takes place at our normal meeting on 2nd March.

Our Chairman has expressed his desire to step down from the post as of this AGM.

A vote(s) by eligible members will be taken on the proposed committee structure for the coming year (with the exception of the Chairman who is elected for a two-year term).

To be able to vote at the AGM, please remember we are a branch under the umbrella of the BHI at Upton Hall so **you must be a member of the BHI at Upton Hall, be a member of our branch, and also sign the voting register at the meeting.**

Proposals for election to any relevant post within the branch must be proposed, seconded and agreed with the member being proposed before being submitted to, and received by the Secretary (norvin@astoolhire.co.uk) 07922 813998) at least two weeks before the AGM. i.e before 20.00 on 16th February 2023.

In addition to the elections there will be the normal reports from the Chairman, Treasurer, Workshop Committee Chairman, Webmaster, and of course the opportunity for all members of the branch to raise any questions.

Mick Welch / Norvin Simpson

Last month's meeting

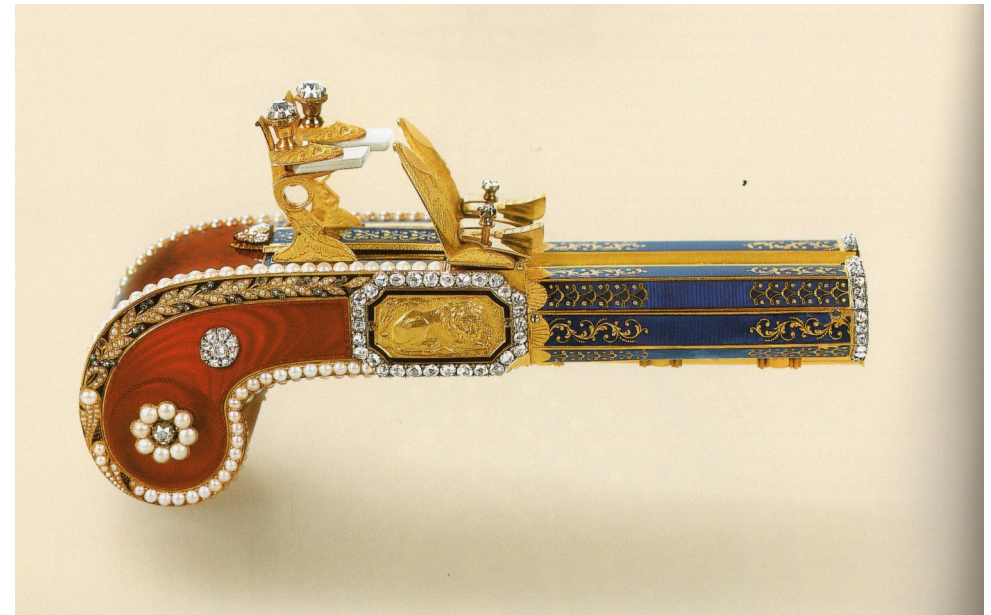
Patek Philippe Museum of Horology DVD

Happy New Year to all of you it seems that the New Year has come round very quickly and our first meeting on 5 January was no exception. Our speaker sadly could not be with us due to transport difficulties experienced with the ongoing train strikes. So, we were delighted that Ron Rose once again came to our aid with a fantastic DVD on the Patek Philippe Museum that had been donated to him by Graham Brooks following a branch visit some eight years ago. This is a multipart DVD that one can dip into at various points to pick out some of the rarer and most illuminating automaton that had been seen to date.

James Marten was able to put the new branch projector with its HD resolution to good use. He started showing us some of the remarkable examples of the enamel as art. These watches had movements made by various masters including Emery 1805 and when the camera zoomed into these pocket timepieces you could see detail beyond belief of facial characteristics, styles and stories from over two centuries ago. Quite obviously these would have been pieces worn by very distinguished people, nobility, and royalty alike. Piece upon piece materialised on the screen showing short automaton delights often actuated by depressing the repeat pendant of the watch. Owners would be entranced by subjects like the dance lesson, maternal love, the mandolin, or the School of Athens. Often these objects were multi functional, like the fan which not only had a miniature watch but on the reverse side a scene accompanied by musical interlude. The objects were becoming increasingly clever with their articulation, movement, and interpretation of sound for

example the whistling bird. A little bejewelled mouse scampered across, and I found the articulation and movement of the silkworm as it wriggled across the background to be most amusing. Interpretations of a barking dog, a tightrope walker, and Venus binding the wings of love.

Of all these animations, perhaps the best was the detailed CAD/CAM animated drawings that were produced by the late John Redfern, (pioneer of such work), of the pistol attributed to



Freres Rochat. This pistol, finely decorated with gold, guilloche enamel in reds and blues, bedecked with pearls and diamonds operates in much the same way as a real flintlock pistol. Fully cocking the right-hand hammer lowers the trigger. Upon firing the hammer flies forward and strikes the flint which flips forward in the usual manner and the barrel cover opens and the bird automaton appears. As if by magic the bird sits on the sites